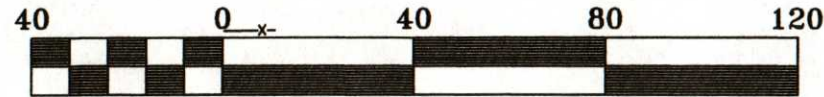
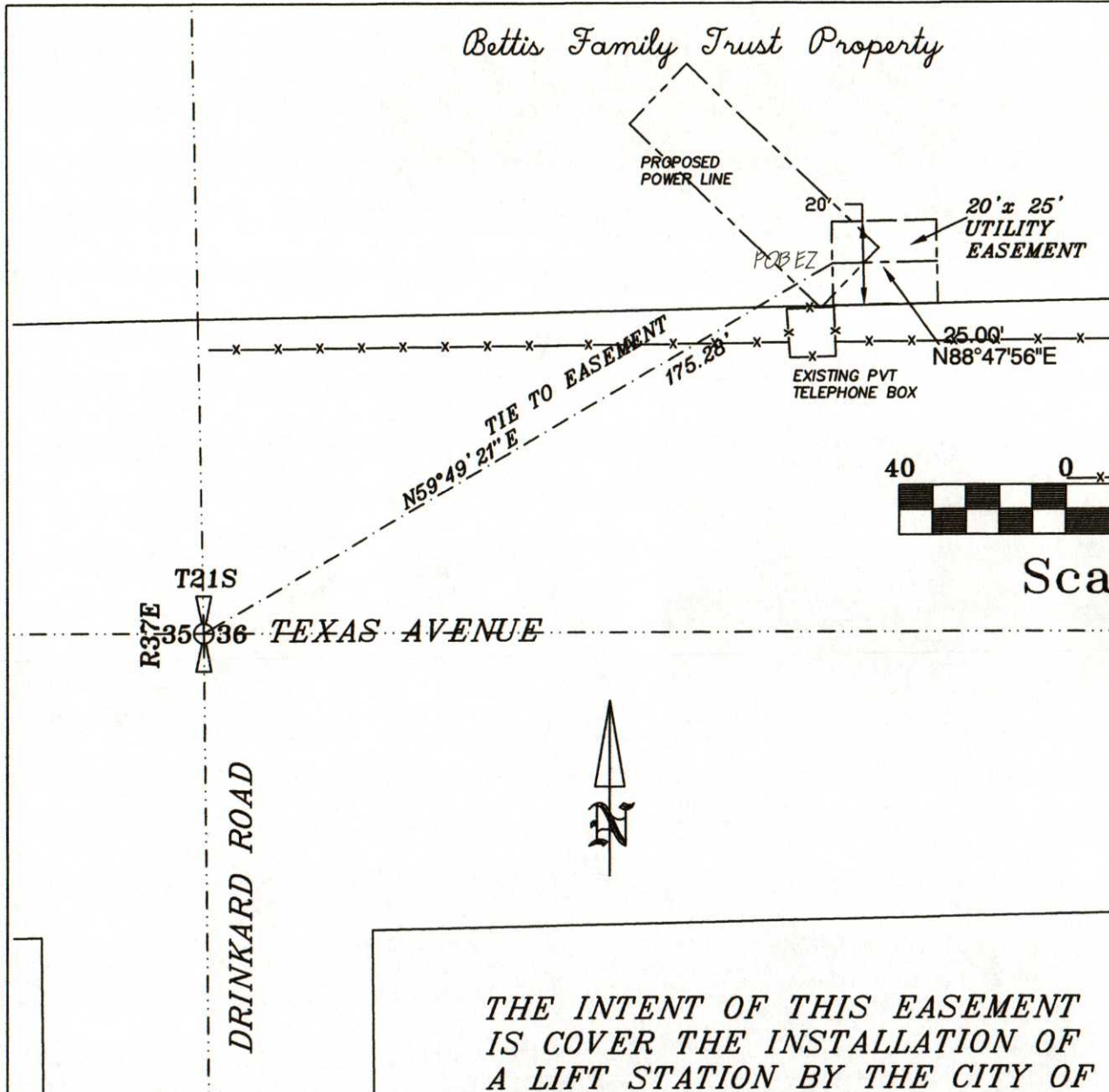


# EXHIBIT A

OF A 20 FOOT WIDE UTILITY EASEMENT  
 THE CITY OF EUNICE, FROM BETTIS  
 DESCRIBED BY ITS CENTER LINE AS

BEGINNING AT A POINT THAT LIES N59°49'  
 THE W/4 OF SEC 36, T21S, R37E, N.M.P.M.,  
 NEW MEXICO; THEN N88°47'56"E FOR 25.00'  
 THIS EASEMENT.

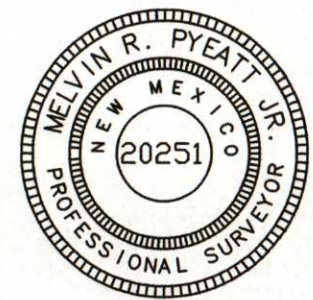


Scale 1" = 40'

### ABBREVIATIONS

- PP POWER POLE
- PPP PROPOSED POWER POLE

THE INTENT OF THIS EASEMENT  
 IS COVER THE INSTALLATION OF  
 A LIFT STATION BY THE CITY OF  
 EUNICE.



INI
SEC.
CITY:
COUNTY:
STATE:
DATE: